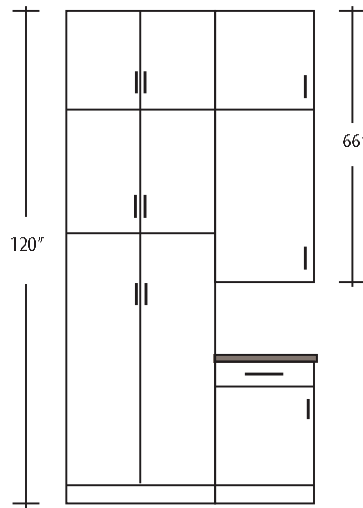


Custom cabinet configurations, or cabinets above 96" tall can be made by means of stacking cabinets. Combinations of existing **Harmoni Wall** and **Tall** cabinets can be ordered to create unique cabinet configurations, or to take overall cabinet heights up to 120" tall. Stacked cabinets are assembled at the factory to ship as one unit under a single finished end panel where applicable.



Ordering stacked cabinets in the **2020** Program is straight-forward, but there is a strict process to ensure your intended configuration.

- See the following procedure for identifying cabinets to be stacked and their location within the stack
-
- Stacked Wall Cabinets must be at least 12" tall
- Stacked Cabinets must all be the same depth
- Finished Ends must be ordered for each unit in the stacked configuration

Oversized cabinets present unique problems in shipping and installation. Make sure your cabinet can be brought into the work site and installed correctly.

Use the nomenclature **W-STACK**, **B-STACK** and **T-STACK** to instruct the factory to join an upper cabinet to a lower cabinet, and adjust the door reveals between stacked units.

	Price	Cu	
W-STACK	no charge	0	Stack cabinets up to 96"
B-STACK	no charge	0	Stack cabinets up to 96"
T-STACK*	725	32	Stack cabinets up to 120"

*Nomenclature for Pricing and Cubes for T-STACK are to account for oversized materials, and additional shipping costs.

CATALOG HFRMANIK

Supplier

The BentWood Companies

Wall doors: ANDROS-W
Tall doors: EURO JOINT
Base doors: ANDROS-B

Drawer fronts: ANDROS-F
Drawer pulls:
Door pulls:

Item	Qty	User Code	Description	
Beech Mel Int				
Cabinets				
1	1	U2466-24	Utility Cabinet.	1,300.00
T-STACK A-BOTTOM				
*1.1	1	T-STACK	T-STACK A	725.00
1.2	1	FLUSHDOOR-TOP	Flush Door To Top Of Cabinet	
1.3	1	USK2424	Shelf Kit-4 Adj	420.00
2	1	W2436	Wall Cabinet	510.00
T-STACK A-TOP				
*2.1	1	W-STACK	W-STACK-A	
3	1	W2148L	Wall Cabinet	755.00
4	1	W2130R	Wall Cabinet	330.00
W-STACK B-BOTTOM				
*4.1	1	W-STACK	W-STACK B	
5	1	W2118-HK	Wall Cabinet w/Tilt-up Stay	850.00
W-STACK B-TOP				
*5.1	1	W-STACK	W-STACK B	
5.2	1	FLUSHDOOR-BOT	Flush Door To Bottom Of Cabinet	
6	1	B21L	Base Cab	435.00
7	1	B21L	Base Cab	435.00
8	1	B21R	Base Cab	435.00
Cabinets sub-total:				6,195.00

ADD THE NAME OF THE STACK AND THE LOCATION OF THE CABINET WITHIN THE STACK TO NOTES IN THE CABINET ATTRIBUTES

TO KEEP 1/8" REVEALS BETWEEN DOORS, ADD FLUSHDOOR MODIFICATION TO APPROPRIATE CABINET

ADD W-STACK TO WALL CABINETS BEING "STACKED" WITH TALL CABINETS

FLUSHDOOR-BOT

Charges

*9	1	ALDER-CHESTNUT	Alder-Chestnut 5%	417.75
----	---	----------------	-------------------	--------

